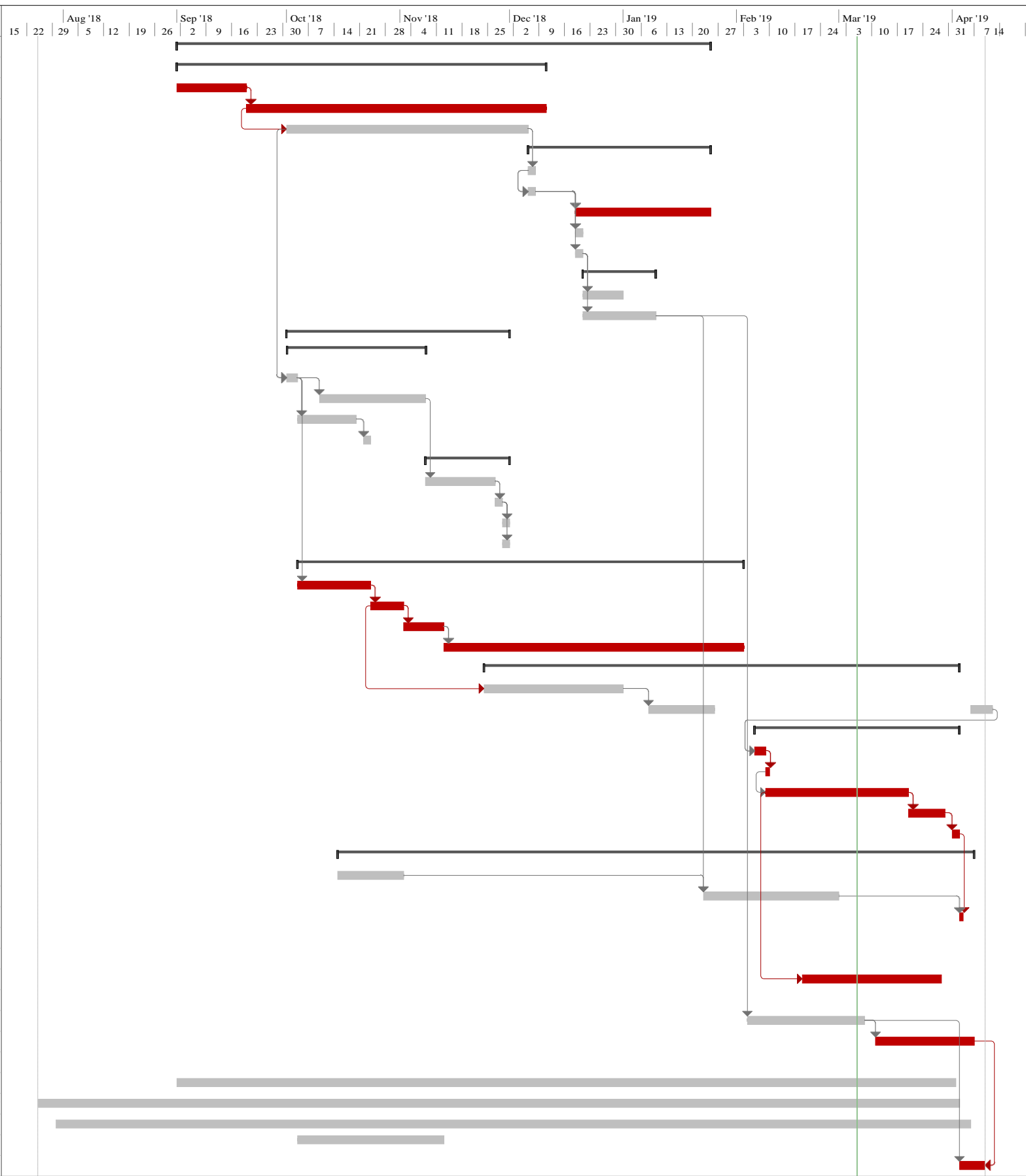


| ID | Task Name | Duration | Start | Finish | Predecessors | Total Slack |
|----|--|-----------|--------------|--------------|-----------------|-------------|
| 1 | Task 1.0: Mix Design | 108 days | Sat 9/1/18 | Thu 1/24/19 | | 0 days |
| 2 | 1.1 Material Research | 74 days | Sat 9/1/18 | Mon 12/10/18 | | 0 days |
| 3 | 1.1.1 Aggregates | 14 days | Sat 9/1/18 | Wed 9/19/18 | | 0 days |
| 4 | 1.1.2 Material Procurement | 60 days | Thu 9/20/18 | Mon 12/10/18 | 3 | 0 days |
| 5 | 1.1.3 Develop Initial Mix Design | 50 days | Mon 10/1/18 | Wed 12/5/18 | 4SS+7 days | 0 days |
| 6 | 1.2 Concrete Testing | 37 days | Thu 12/6/18 | Thu 1/24/19 | | 0 days |
| 7 | 1.2.1 Slump Test | 2 days | Thu 12/6/18 | Fri 12/7/18 | 5 | 0 days |
| 8 | 1.2.2 Cylinder Sample Collection | 2 days | Thu 12/6/18 | Fri 12/7/18 | 7SS | 0 days |
| 9 | 1.2.3 Compressive Strength Test | 28 days | Wed 12/19/18 | Thu 1/24/19 | 8FS+7 days | 0 days |
| 10 | 1.2.4 Split Tensile Strength Test | 2 days | Wed 12/19/18 | Thu 12/20/18 | 8FS+7 days | 0 days |
| 11 | 1.2.5 Dry Unit Weight | 2 days | Wed 12/19/18 | Thu 12/20/18 | 8FS+7 days | 0 days |
| 12 | 1.3 Refining Initial Mix Design | 14 days | Fri 12/21/18 | Wed 1/9/19 | | 0 days |
| 13 | 1.3.1 Creating Decision Matrix for Mix Design | 7 days | Fri 12/21/18 | Mon 12/31/18 | 11 | 0 days |
| 14 | 1.3.2 Finalizing Competition Mix Deliverables | 14 days | Fri 12/21/18 | Wed 1/9/19 | 11 | 0 days |
| 15 | Task 2.0: Reinforcement Design | 46 days | Mon 10/1/18 | Fri 11/30/18 | | 0 days |
| 16 | 2.1 Testing of Reinforcement Materials | 28 days | Mon 10/1/18 | Wed 11/7/18 | | 0 days |
| 17 | 2.1.1 Thickness | 3 days | Mon 10/1/18 | Wed 10/3/18 | 5SS | 0 days |
| 18 | 2.1.2 Mechanical Bonding Test | 21 days | Wed 10/10/18 | Wed 11/7/18 | 17FS+3 days | 0 days |
| 19 | 2.1.3 Determine Percent Open Area | 12 days | Thu 10/4/18 | Fri 10/19/18 | 17 | 0 days |
| 20 | 2.2 Reinforcement Selection | 2 days | Mon 10/22/18 | Tue 10/23/18 | 19 | 0 days |
| 21 | 2.3 Concrete Pre-Stressing Assessment | 18 days | Thu 11/8/18 | Fri 11/30/18 | | 0 days |
| 22 | 2.3.1 Reinforcement Strength | 14 days | Thu 11/8/18 | Mon 11/26/18 | 18 | 0 days |
| 23 | 2.3.2 Risk/Benefit Analysis | 2 days | Tue 11/27/18 | Wed 11/28/18 | 22 | 0 days |
| 24 | 2.3.3 Determining Pre-Stressing Arrangement and Forces | 2 days | Thu 11/29/18 | Fri 11/30/18 | 23 | 0 days |
| 25 | 2.4 Reinforcing Mix Materials | 2 days | Thu 11/29/18 | Fri 11/30/18 | 23 | 0 days |
| 26 | Task 3.0: Hull Design | 92 days | Thu 10/4/18 | Sat 2/2/19 | | 0 days |
| 27 | 3.1 Draft Hull in SolidWorks | 14 days | Thu 10/4/18 | Tue 10/23/18 | 17 | 0 days |
| 28 | 3.2 Structural Analysis | 7 days | Wed 10/24/18 | Thu 11/1/18 | 27 | 0 days |
| 29 | 3.3 Mold Design | 7 days | Fri 11/2/18 | Mon 11/12/18 | 28 | 0 days |
| 30 | 3.4 Mold Procurement | 64 days | Tue 11/13/18 | Sat 2/2/19 | 29 | 0 days |
| 31 | Task 4.0: Construction | 98 days | Sat 11/24/18 | Tue 4/2/19 | | 5 days |
| 32 | 4.1 Construction Table | 28 days | Sat 11/24/18 | Mon 12/31/18 | 28SS | 0 days |
| 33 | 4.2 Practice Canoe | 20 days | Tue 1/8/19 | Thu 4/11/19 | 32 | 0 days |
| 34 | 4.3 Final Canoe | 41 days | Wed 2/6/19 | Tue 4/2/19 | | 5 days |
| 35 | 4.3.1 Material Set Up | 3 days | Wed 2/6/19 | Fri 2/8/19 | 33FS+19 days | 0 days |
| 36 | 4.3.2 Placement | 1 day | Sat 2/9/19 | Sat 2/9/19 | 35 | 0 days |
| 37 | 4.3.3 Curing | 28 days | Sat 2/9/19 | Tue 3/19/19 | 36SS | 0 days |
| 38 | 4.3.4 Finishing | 8 days | Wed 3/20/19 | Fri 3/29/19 | 37 | 5 days |
| 39 | 4.3.5 Lettering | 2 days | Mon 4/1/19 | Tue 4/2/19 | 38 | 5 days |
| 40 | Task 5.0: Competition Deliverables | 132 days | Mon 10/15/18 | Sat 4/6/19 | | 2 days |
| 41 | 5.1 Acknowledgment Form and Preliminary Schedule | 14 days | Mon 10/15/18 | Thu 11/1/18 | | 0 days |
| 42 | 5.2 Project Overview and Technical Addendum | 30 days | Wed 1/23/19 | Thu 2/28/19 | 41,14 | 0 days |
| 43 | 5.3 Transportation | 1 day | Wed 4/3/19 | Wed 4/3/19 | 42FS+20 days,39 | 5 days |
| 44 | 5.4 Aesthetics | 33 days | Tue 2/19/19 | Thu 4/4/19 | | 4 days |
| 45 | 5.4.1 Canoe Stand | 12 days | Wed 3/20/19 | Thu 4/4/19 | 37 | 4 days |
| 46 | 5.4.2 Cutaway Section | 28 days | Tue 2/19/19 | Thu 3/28/19 | 37SS+7 days | 9 days |
| 47 | 5.4.3 Tabletop Display | 9 days | Mon 3/25/19 | Thu 4/4/19 | 45SS+3 days | 4 days |
| 48 | 5.5 Design Paper | 25 days | Mon 2/4/19 | Thu 3/7/19 | 14 | 3 days |
| 49 | 5.6 Oral Presentation | 21 days | Mon 3/11/19 | Sat 4/6/19 | 48 | 2 days |
| 50 | Task 6.0: Project Management | 191 days | Wed 7/25/18 | Sat 4/6/19 | | 2 days |
| 51 | 6.1 Fundraising | 158 days | Sat 9/1/18 | Mon 4/1/19 | | 7 days |
| 52 | 6.2 Meetings | 187 days? | Wed 7/25/18 | Tue 4/2/19 | | 6 days? |
| 53 | 6.3 Schedule Management | 187 days | Mon 7/30/18 | Fri 4/5/19 | | 3 days |
| 54 | 6.4 Safety Training | 28 days | Thu 10/4/18 | Mon 11/12/18 | | 0 days |
| 55 | Task 7.0: Attend PSWC at Cal Poly SLO | 6 days | Wed 4/3/19 | Tue 4/9/19 | 48,49FF | 0 days |



| | | | | |
|---|------|---------|-----------------|----------|
| Project: Critical Path Schedule Date: Wed 3/6/19 | Task | Summary | Project Summary | Critical |
|---|------|---------|-----------------|----------|